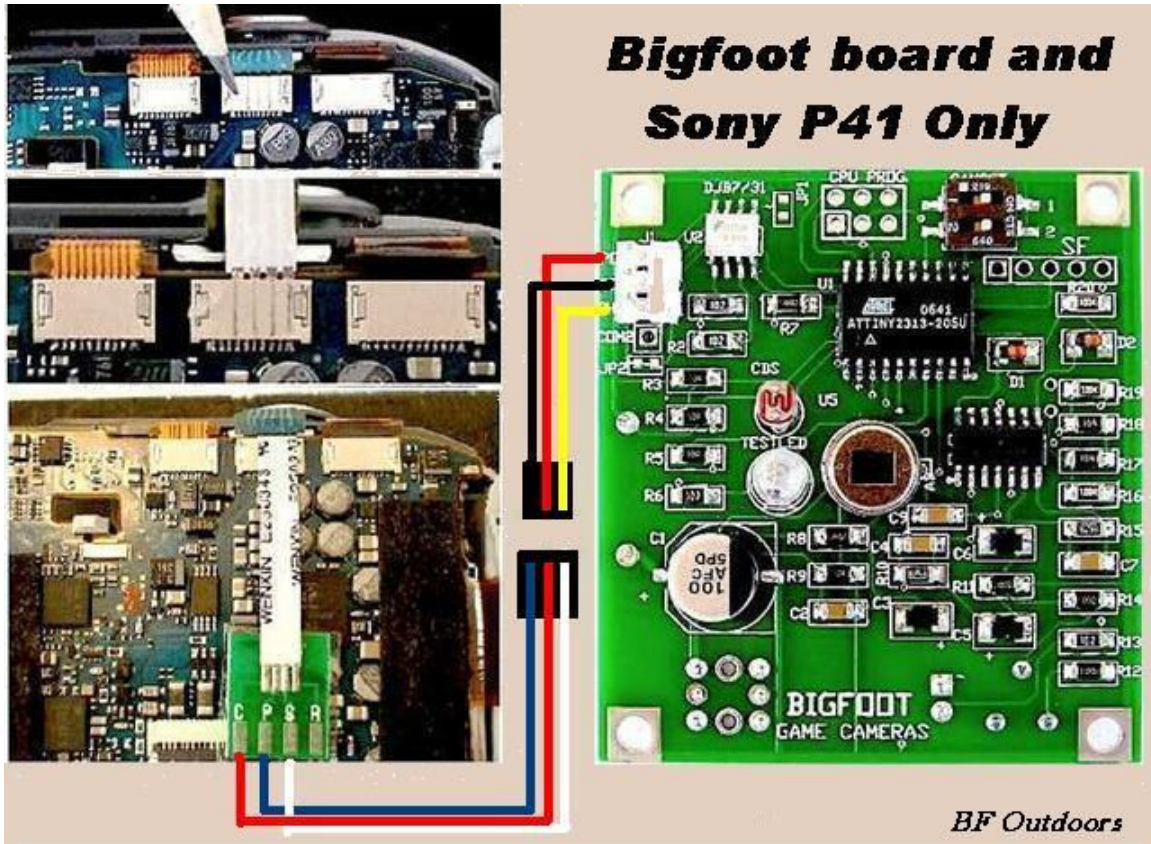


Connecting a Sony DSCP41 camera to a Bigfoot Sensor  
[www.bfoutdoors.com](http://www.bfoutdoors.com)



Red = Power

Black = Common

Yellow = Shutter

I recommend you use 30 gauge wire inside the camera and a shutter assembly from ([www.hagshouse.com](http://www.hagshouse.com)) for modifying this camera.