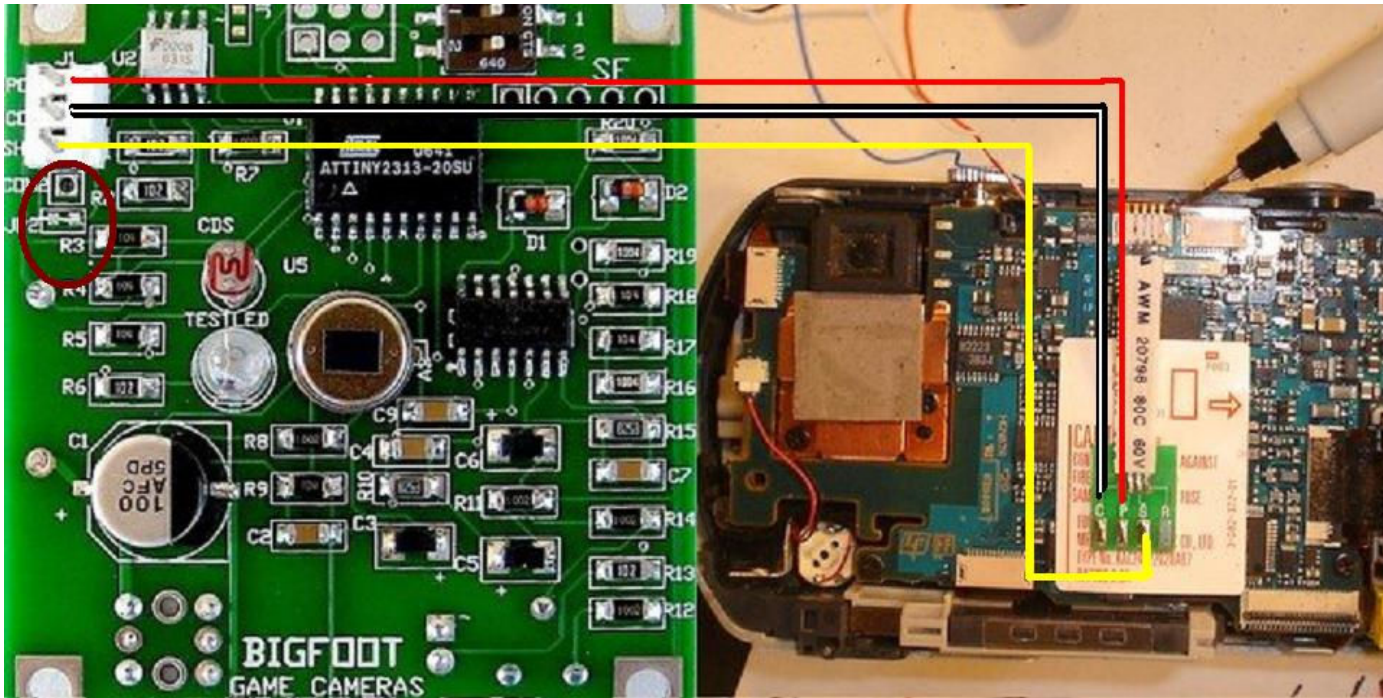


## Connecting a Sony DSCP32 to a Bigfoot Sensor [www.bfoutdoors.com](http://www.bfoutdoors.com)



Red = Power

Black = Common

Yellow = Shutter

I recommend you use 30 gauge wire inside the camera and [hagshouse store](http://hagshouse.com) ([www.hagshouse.com](http://www.hagshouse.com)) shutter assembly for modifying this camera.