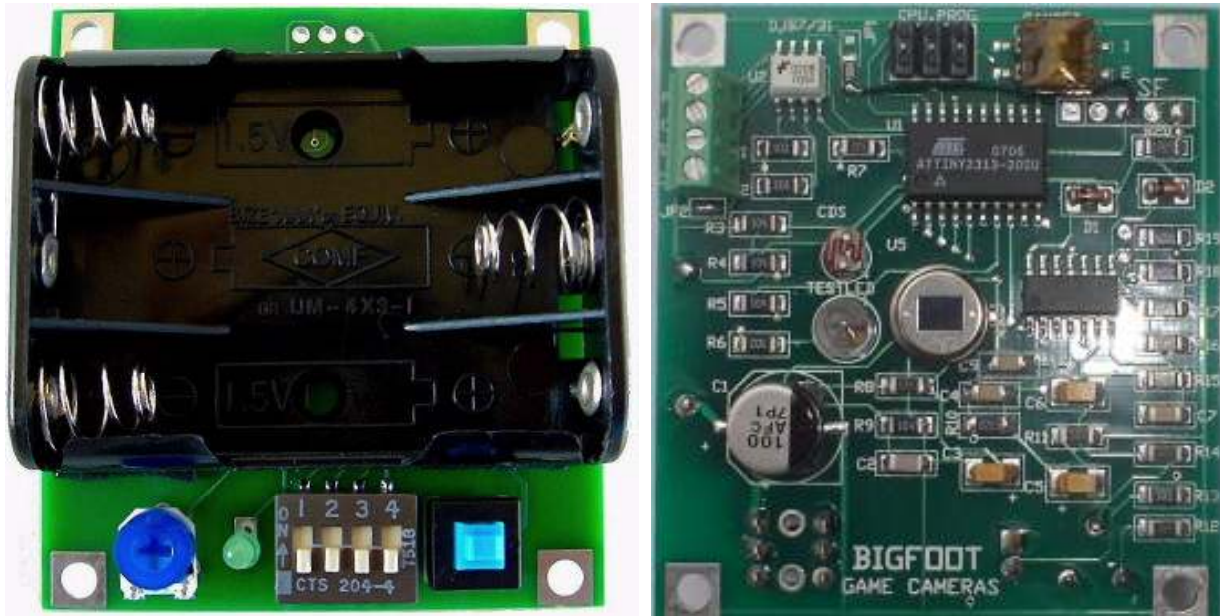


Bigfoot Board Operating Instructions

Jazz Programming
www.info@bfoutdoors.com



Summary:

The board uses 3 AAA batteries for power that are inserted on the “Control” side of the Board. Located under the batteries are the user controls that consist of a PIR sensitivity pot, a STATUS led, a 4-position program DIP switch, and the Power switch. On the Opposite side of the board is located the electronic components. This includes the PIR Sensor, day/night photocell and Status led.

Jazz Power Monitoring

Note: The Jazz Must be connected to the Jazz Camera in order for it to startup properly Cannot be turned on during walk test as the Bigfoot board will automatically turn it off when it detects the camera is on. This prevents the camera gets out of sequence with the board. Note: The camswitch and its function are not active with Jazz programming. Also JP1 and JP2 should not be Jumpered.

Program Dips

The program DIP contains 4 program switches.

Switches 1 and 2 set the record time of the videos.

Switches 3 and 4 set the delay between videos.

Setup

Power the board off before changing any dip switches.

Video Record Settings (Switch 1 and 2)

There are 4 different record time settings that are set by switches 1 and 2 on the program dip.

Video Record Settings (Switch 1 and 2)

Set switches 1 OFF(down) and 2 OFF (down)15 Second Video

Set switches 1 OFF(down) and 2 ON (up).....30 Second Video

Set switches 1 ON (up) and 2 OFF (down).....1 Minute Video

Set switches 1 ON (up) and 2 ON (up).....3 Minute Video

Video Delay Settings (Switch 3 and 4)

There are 4 different Delay time settings that are set by switches 3 and 4 on the program dip.

Video Delay Settings (Switch 3 and 4)

Set switches 1 OFF(down) and 2 OFF (down)No Delay.

Set switches 1 OFF(down) and 2 ON (up).....1 Minute Delay.

Set switches 1 ON (up) and 2 OFF (down).....3 Minute Delay.

Set switches 1 ON (up) and 2 ON (up).....6 Minute Delay.

Sensitivity

The PIR sensitivity adjustment is set by the PIR potentiometer located next to the STATUS led. Turning the potentiometer counter-clockwise will decrease the sensitivity and range. Turning it clockwise will increase the range. The potentiometer is only a Single turn pot, so don't rotate it more than 180 degrees. I recommend that you start with the sensitivity so the flat edge of the pot is facing the 12 o clock position for the initial trail.

Note: The camswitch and its function are not active with Jazz programming. Also JP1 and JP2 should not be Jumpered.

Operation

When the board is first powered up, the green status light and also the bright red led will turn on solid while the board warms up and the pir stabilizes. Also the Jazz Camera and the Array will turn on for about 8 seconds to confirm the Array and the Jazz are connected correctly and the batteries are installed properly. Next the camera will turn off and the leds will turn off.

Walk Test

Next the board will automatically go into WALK TEST mode.

The board automatically enters TEST mode after the previously described warm up period and will now continue to be in TEST mode for 60 seconds of no motion being detected. During this time the green status led will blink once every second. If during test mode, motion is detected, both the RED TEST led and the GREEN STATUS led will light solid. The 60 second timer is then reset and the board stays in test mode for another 60 seconds. If no motion is detected in the 60 seconds the board will then enter LIVE mode.

Live mode

When motion is detected the board will measure the light and determine if the Array should power on, if dark the Array Sister board will be powered on, it will also turn on *the camera, the sound sister board and start recording the video. It will continue to record until the set record time is reached then turn the sound Array and Camera off.*

Jazz Power Monitoring

The Jazz camera has a very unstable power down and can actually turn back on after it has been turned off. This became a very complex issue. What we have done is added the ability of the Bigfoot board to communicate with the Jazz camera to make sure it has turned off after a recording. What needs to be done in the cameras modification is we need to connect a wire from the Jazz Cameras Battery Ground Terminal to the Bigfoot Boards # 4 pad.

Note: The Jazz Cannot be turned on during walk test as the Bigfoot board will automatically turn it off when it detects the camera is on. This prevents the camera gets out of sequence with the board

