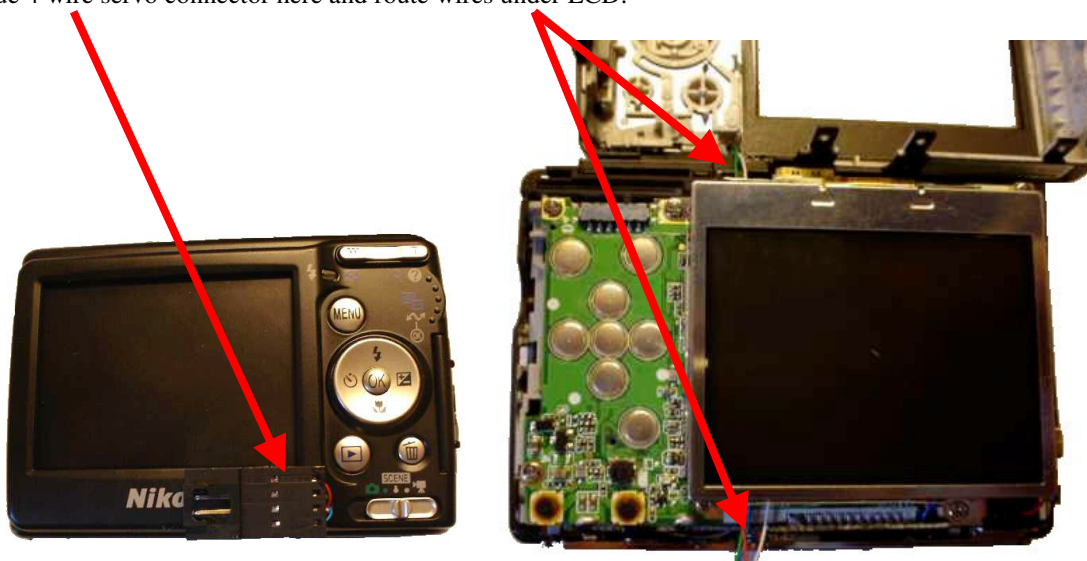
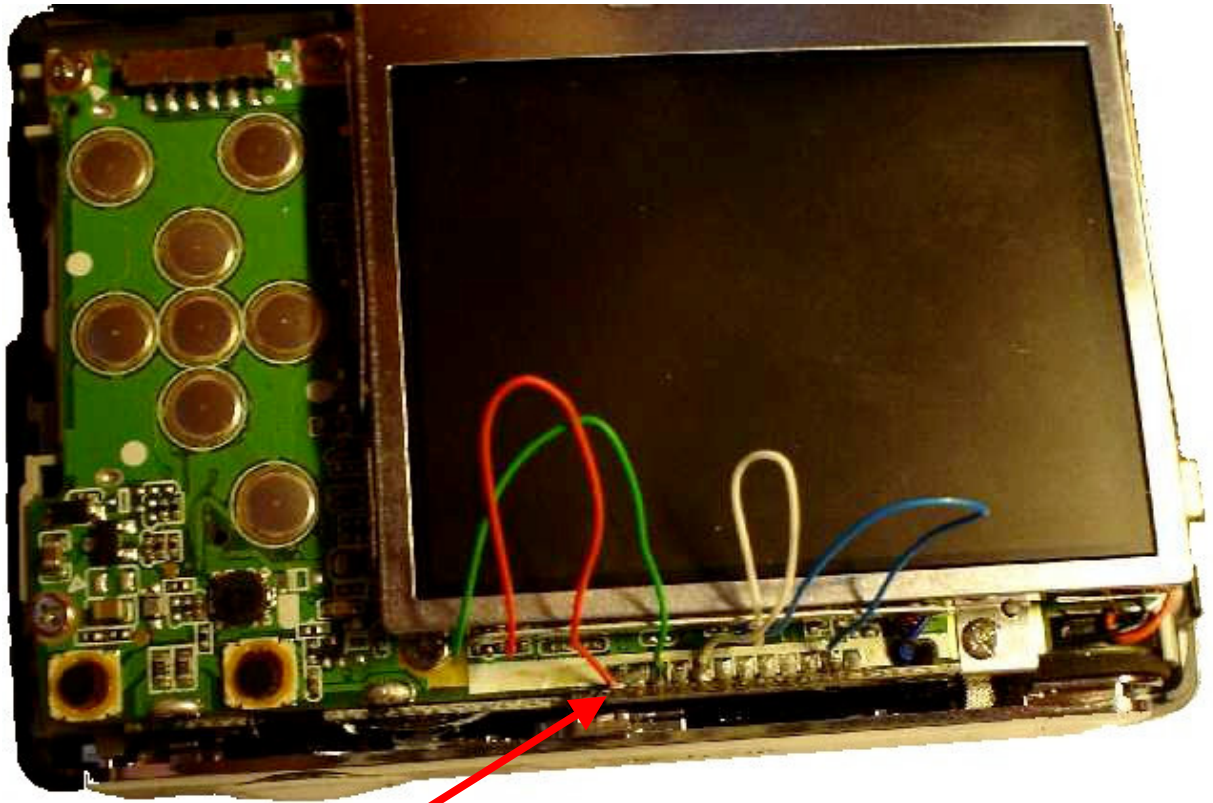


Drill hole here for routing wires.



Glue 4 wire servo connector here and route wires under LCD.





Create a solder bridge between the 1<sup>st</sup> and 2<sup>nd</sup> contact on the left (shutter and refresh) and solder the shutter wire there (red wire in this picture). The Blue wire is on the 2<sup>nd</sup> contact from the right, connecting the red and blue wire with shutter a picture. The green wire is on the 3<sup>rd</sup> contact from the left and the white wire is on the 5<sup>th</sup>, connecting these will power the cam on and off. The wires here are really a little too long. Tuck the excess wire under the LCD and put the cam back together. Not sure what the optimal shutter time is for this camera, but any shutter time between 0.5 and 2 seconds will work, because you can hold the shutter down and then turn the camera on, and it will take a picture. Refresh and flash range to be determined later.