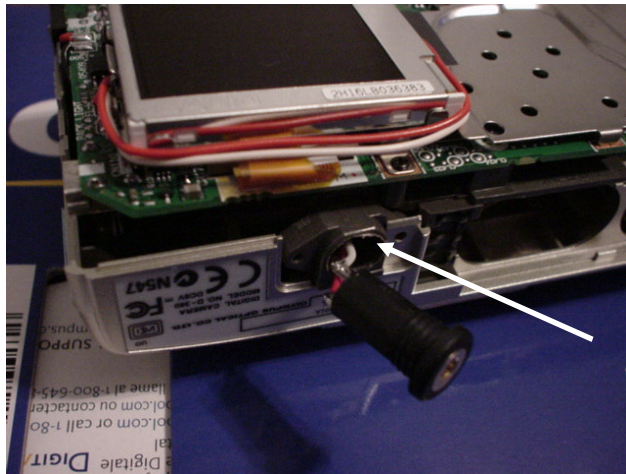


## D380 Modifications for Snapshot Sniper

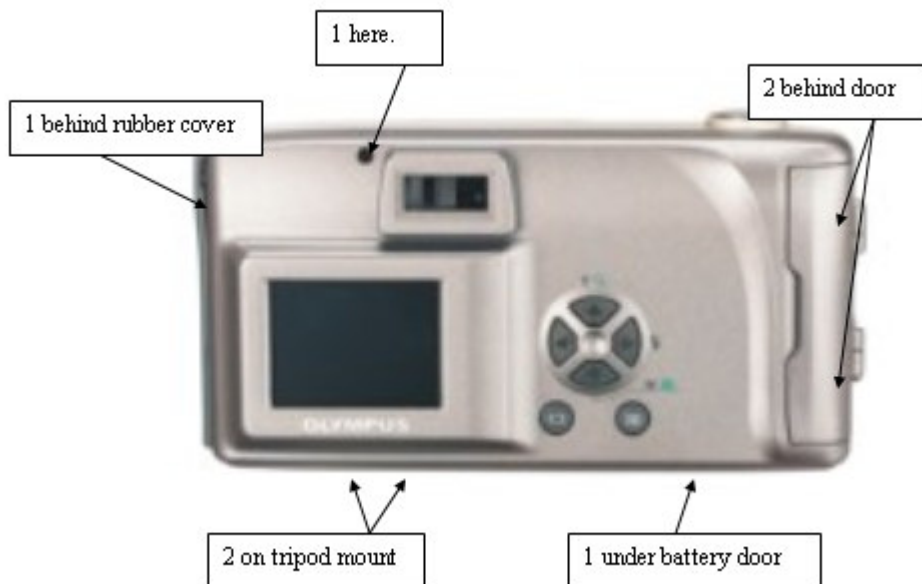
1. Drill a 5/16" hole through the tripod mount.

NOTE: You can cause major damage to the camera on this step. When you drill the hole and the bit breaks through, it will want to grab and pull itself through the camera (this is not good). ;- ) So keep a firm grip on it.

We do this on a drill press with the camera assembled. This way we can set the depth to exactly where the bit will go all of the way through, but no further. If you have access to a drill press, just set the depth about 1/16" deeper each stroke until you are all of the way through and also use the slowest speed possible for the drill. If you go too far, the bit will grab wires inside of the camera and you will have a big job ahead of you. If you are using a hand drill, disassemble the camera and then drill the hole.

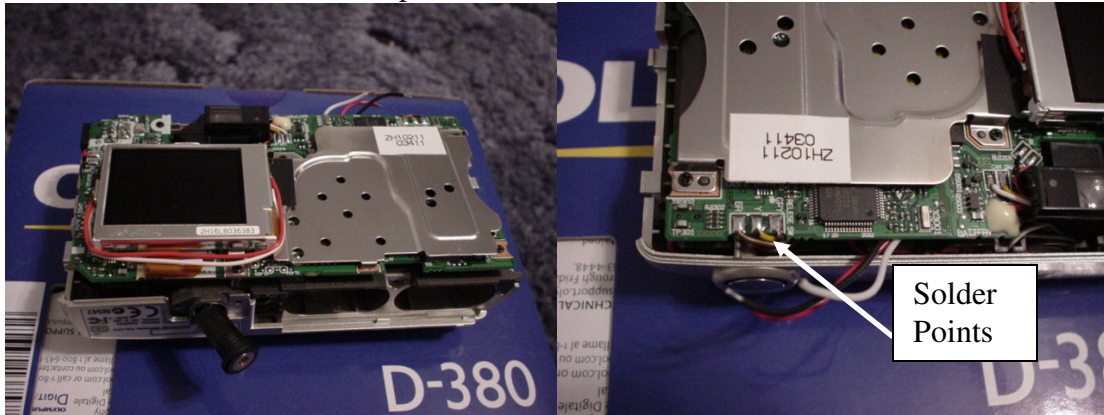


2. Disassemble the camera. There are seven screws that need to be removed.

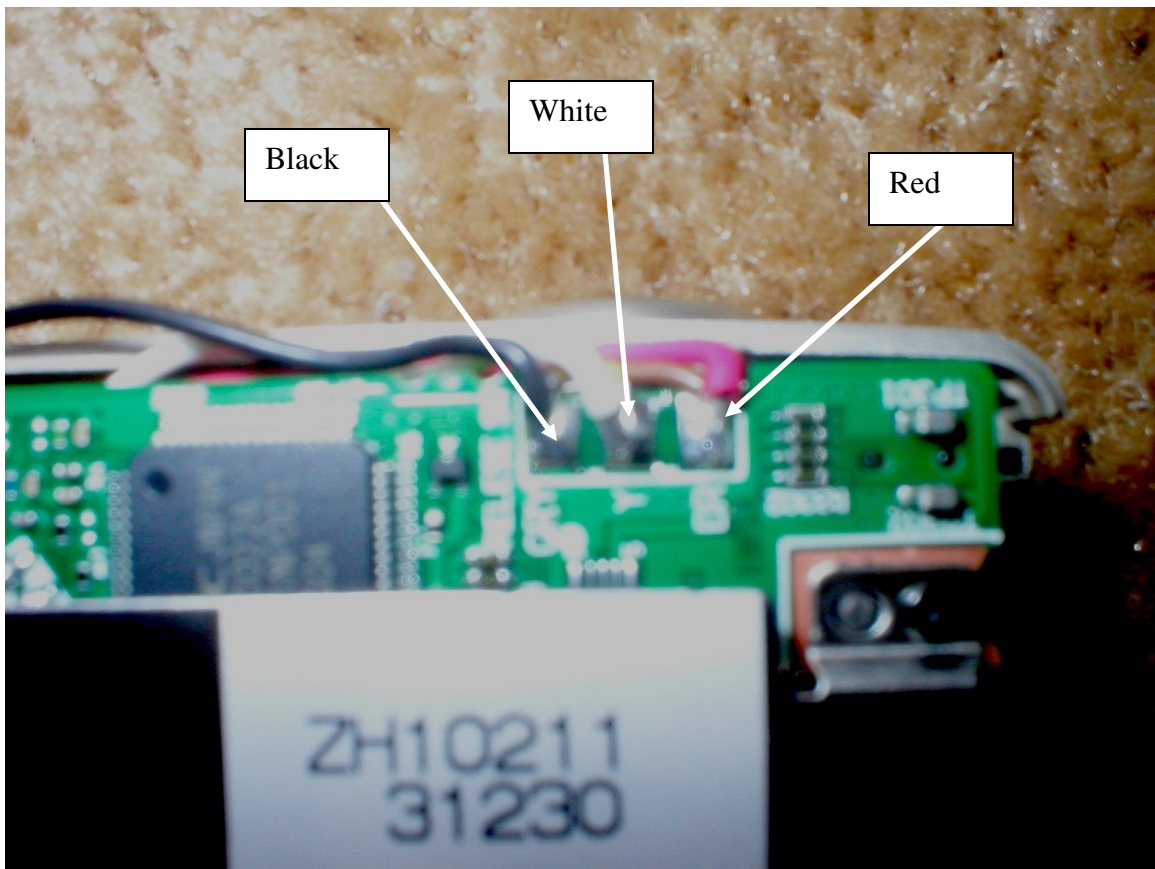


3. Carefully remove the back cover and set it aside.

4. Insert wires through tripod mount and route them through the camera so that they come out near the 3 solder points as shown.



5. Solder the wires as shown and reassemble the camera.



6. Mount the stereo jack into the tripod hole and let it dry and your done.  
Black is common (ground) = "G" on board  
White is Shutter = "S" on board  
Red is Refresh = "O" on board